



INTERNATIONAL FORUM OSLO

NEWSLETTER

May 2026
Issue No. 517



Coming Events:



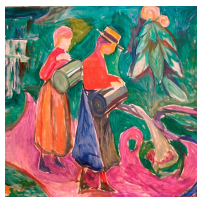
Annual General Meeting, June 8, p. 5



May Monthly Meeting, May 4, p. 8
Kari Hempel: 'Faith on the Prairie
Meets Faith in Grønland, Oslo.'



Special Events, May 21, p. 9
Visit to Oscarshall, Bygdøy



Art Committee, May 28, p. 11
The Munch Museum:
*Edvard Munch and the
Chocolate Factory*



INTERNATIONAL FORUM

P.O. Box 1505 Vika, 0117 Oslo, Norway

Website: www.iforum.no Email: info@iforum.no

Bank account number: 1600 40 36631

VIPPS to: 591747

Board 2025-2026: Elizabeth S. Rasmussen (President), Sissel Lindeman, Trudy Brand-Jacobsen, Trine Westborg, Adina Badescu and Lia Rendòn (Board Members), Andis Faizasyah (Deputy)

Office: Please send inquiries by email.

Email: info@iforum.no

Editor: Elizabeth S. Rasmussen

Editorial Team: Elspeth Walseth, Robin Wittusen and Renate Scapin

Forum Secretary: TBA

Treasurer: TBA

Accounting Services: Account Group

Auditor: Verena Krienke

Committee Leaders:

Monthly Meetings: Gunnel Anita Solheim

Special Events: Mona B. Reinboth

Art Committee: Jane Steenbuch

Activities: Gunnel Anita Solheim

Nomination Committee: Åsny W. Walters, Berit Lindstrøm and Wenche Mohr

If you wish to become a member of International Forum, please contact us by email, and we will send you an application form.



IN THIS NEWSLETTER

FEATURES/EVENTS	DATE	TIME	PAGE
-----------------	------	------	------

FROM THE BOARD

The President's Page			4
Annual General Meeting	June 8	17:45	5
Grethe Frydenlund Award			7

COMING EVENTS

May Monthly Meeting Kari Hempel: 'Faith on the Prairie Meets Faith in Grønland, Oslo.'	May 4	17:45	8
Special Events Visit to Oscarshall Castle, Bygdøy	May 21	11:15	9
Art Committee Munch Museum: <i>Edvard Munch and the Chocolate Factory</i>	May 28	12:45	11

REPORTS

Art Committee Ann Lislegaard: <i>Animoid</i>			13
--	--	--	----

DEADLINE FOR SUBMITTING ARTICLES

For the **June Newsletter**, the deadline is **May 15**. Please send your contribution to Elizabeth S. Rasmussen by email and to info@iforum.no. The Editorial Team reserve the right to edit all material.



THE PRESIDENT'S PAGE



Dear Members,

Summer is around the corner, and we are all looking forward to warmer weather and to the summer holidays. However, before the end of the IF year, I must commend the committees for having surpassed themselves this season in offering high-quality speakers and visits. There are three more to come in May. The lineup for the autumn is also very promising!

The committees are run by very dedicated and autonomous members. They are the pillars of our organisation. The Monthly Meeting Committee offers the possibility for a great number of members to meet, not only for lectures but also for more informal gatherings. This is something that the Monthly Meeting Committee and the Board have been discussing. We want to try to have at least one informal meeting in autumn and in spring at which members just mingle and socialise with some light snacks, coffee, tea and wine. The first Monthly Meeting in September will be such a meeting, a great opportunity to meet both new and old members. We hope to see you there!

We are now preparing for the AGM in June. Unfortunately, we still lack volunteers for some positions. I want to remind you that our organisation cannot continue to prosper without volunteers. We are a team. And because we are all very busy travelling and being with family, we need a *full* team so that the members volunteering can have time for both their private life and set off time for the organisation. I therefore urge you to seriously consider giving some of your time to the administration of the International Forum!

We specifically need members who are willing to set off some time for the Editorial Team. Being on the *Newsletter* team will give you an opportunity to really see what is going on in the Forum. For events to run smoothly, members must be informed of what is on the agenda and have an overview of the various events offered. So, if you feel that you can contribute, please come forward.

I hope that the spirit of goodwill and friendship will continue into the new season. I am looking forward to seeing you all at the Annual General Meeting on June 8! In the meantime, have a happy th of May!

Elizabeth S. Rasmussen
President



NOTICE OF THE ANNUAL GENERAL MEETING

Majorstuen Seniorarena

June 8

In accordance with the Statutes of the International Forum, formal notification is hereby given of the Annual General Meeting to be

We hope our members will enjoy this end-of-year social gathering, which includes a plentiful buffet, refreshments, wine, mineral water, coffee, tea and cakes *after* the business items on the agenda have been completed.

A G E N D A

1. Welcome by the President
2. Approval of a member to take the minutes of the meeting
3. Approval of two signatories to the minutes
4. Approval of four tellers
5. Amendments to the Statutes
6. The Board's Annual Report
7. The Treasurer's Annual Report and the Auditor's Report
8. Elections
9. Any Other Business

Art Committee:

Leader: Jane Steenbuch	GBR	GM
Trudy Brand-Jacobsen	CAN	GM
Rosi Løvdal	USA	GM
Katarina Plavnik	SWE	GM
Inger M. Ræder	NOR	FO
Bente Skarsgård	NOR	GM

Special Events Committee:

Leader: Mona B. Reinboth	NOR	GM
Rosemary Hauge	GBR	GM
Hildur M. Haugen	NOR	GM
Sonia N. Mykletun	NOR	FO
Jessie Sandosham	CAN	GM
Pernille Stavseth	NOR	GM
Astri Sunde	NOR	FO
Åsny Wedege Walters	NOR	GM
Jean H. Lundberg		GM
Bente Brandt	NOR	GM



GRETHE FRYDENLUND AWARD

The Board is very pleased to honour **Vicky Alme** with the Grethe Frydenlund Award for 2026.

Vicky has served as the Forum Treasurer for a great number of years, being responsible for setting up the accounts, keeping an eye on the membership list, paying invoices and expenses and dealing with the bank. She worked diligently as a Treasurer, carrying out her tasks with great dedication and excellence.

Vicky Alme truly represents the values of International Forum.

She is the seventh recipient of this prestigious honour.

An article on Vicky will be published in the June *Newsletter*. She will be presented with a gold-plated International Forum Brooch at the AGM on June 8.

The Board

COMING EVENTS
MAY MONTHLY MEETING

Monday, May 4



Kari Hempel

‘Faith on the Prairie Meets Faith in Grønland, Oslo.’

Dr. Kari Guttormsen Hempel is affiliated with the University of Stavanger (UiS) where she has worked as an associate professor at the Faculty of Educational Sciences and Humanities. Her research focuses on migration, on how immigrant groups shape community and religious practices, and on how religion affects integration. She has published several books and scientific articles.

Her recent work explores immigration, religion and integration, especially relating to Norwegian migrants to the U.S. after 1870 and Pakistani migrants to Norway after 1970.

- DATE/TIME: **Monday, May 4** at 17:45 (for 18:00)
- PLACE: Majorstuen Seniorarena, Slemdalsveien 3a, 0369 OSLO
- SIGN UP: Sign up to Gunnel Anita Solheim by email.:
as soon as possible.
- PRICE: **NOK 105.-** Please contact the Monthly Meeting Committee if you want to attend. Then make your payment **preferably by VIPPS** to 591747 or pay by bank transfer to the Forum account: 1600 40 36631. **Remember** to **state the event** and **your name** in the dialogue box for VIPPS and in the KID-number box for bank payments.

Guests are welcome.

Cancellations and no-shows after the deadline will be charged.

For last-minute cancellations, please call Gunnel Anita on Mobile phone.

SPECIAL EVENTS

Visit to Oscarshall Castle

May 21



Oscarshall Summer Palace.

Photo: Øivind Möller Bakken, The Royal Court ©

The Special Events Committee has the pleasure to invite you to a guided tour at Oscarshall Castle at Bygdøy. This charming hall was built as a private summer palace, dedicated to the celebration of art, music, and poetry. It was constructed around the same time as the Royal Palace in central Oslo and was completed in 1852.

The architect of Oscarshall was Johan Henrik Nebelong, and leading Norwegian contemporaneous artists – including Adolph Tidemand, Hans Gude, Joachim Frich, Hans Michelsen, and Christopher Borch – were commissioned to decorate the interior.

Architect Nebelong regarded the park as an integral part of his overall design for the summer palace. The park and buildings were meant to complement one another, with romantic winding paths following the natural curves of the landscape.

Over the years, the paths and vegetation in the park changed. In recent years, considerable effort has therefore been made to recreate Nebelong's original layout and restore the romantic park. The park around the summer palace is open to the public during the castle's opening hours. No ticket is required to enjoy the gardens.

DATE: **Thursday, May 21** at 11:15 for (11:30)

PLACE: Oscarshall Castle, Oscarshallveien 15, 0287 Oslo

SIGN UP: To Mona B. Reinboth by email [_____](#)
no later than **May 14**.

PRICE: **NOK 145,-**. After **signing up** and **receiving confirmation** of your participation by email, please make your payment **preferably by VIPPS** to 591747 or pay by **bank transfer** to the Forum account: 1600 40 36631. Please **state your name and the event** in the dialogue box for VIPPS and in the KID-number box for bank payments.

No cash will be handled at the venue.

LUNCH: The Folkemuseum café or the nearby Rohdeløkken Kafé which belongs to Bygdøy Kongsgård offer refreshments.

TRANSPORT: Bus 30 to Bygdøy Kongsgård or Norsk Folkemuseum. There are some minutes to walk from the bus stop to Oscarshall. The Bygdøy ferry goes from the City Hall area to Dronningen at Bygdøy.

Maximum number of participants: **25**

Guests are welcome if space is available.

Cancellations after the deadline will be charged.

For questions or last-minute cancellations, please contact:
Mona B. Reinboth on mob.: 948 82 895.

ART COMMITTEE

Edvard Munch and the Chocolate Factory

The Munch Museum

Thursday, May 28



MUNCH MUSEUM

Experience Edvard Munch's historic decoration for the Freia chocolate factory for the first time in an exhibition that connects his interest in creating art for public spaces with themes of cacao, workers' rights and women's emancipation.

Edvard Munch's large-scale paintings for the Freia chocolate factory in 1923 were the first ever decorative artworks to be commissioned by a factory. It was also the first time that artwork of this type had been commissioned for a women's canteen. The temporary relocation of these frescos from Freia's headquarters to the Munch Museum has made it possible to view them at a close range, together with a rich selection of sketches and other related works.

Taking the frieze of paintings Munch created for Freia as a starting point, the exhibition explores his interest in making art for public spaces, as well as the project's broader social context. At the time, Freia – Norway's most iconic chocolate brand, both then and now, was seen as a progressive company which prioritised the wellbeing, health and welfare of its employees. Two thirds of Freia's staff were women, and the exhibition highlights women's campaign for rights, as both employees and human beings.

DATE/TIME: **Thursday, May 28**, at 12:45 (for 13:00)

PLACE: Munch Museum, Edvard Munchs plass 1, 0194 Oslo

PRICE: **NOK 100.-** for the guide.

Entrance to the Munch Museum is separate and costs **NOK 220.-** for non-members of the Museum.

However, **if you are not a museum member, please do not pay the entrance fee until everyone has arrived.** It may be possible to be a 'guest' of someone who has a membership.

SIGN UP: Please sign up to Katarina Plavnik by email:
as soon as possible and no later than May 21.

After signing up and receiving confirmation by email, please make your payment **preferably by VIPPS** to 591747 or pay by bank transfer to the Forum account: 1600 40 36631. **Remember to state your name and event** in the dialogue box for VIPPS and in the KID-number box for bank payments.

No cash will be handled at the venue.

Maximum number of participants: **25**

Guests are welcome if there is space. We need at least **15** participants for the guided tour to be held.

TRANSPORT: The closest bus stop is Bjørvika. Tram 12 stops at Dronningens gate (11-minute walk to the Museum). Tram 13 stops at Bjørvika (6-minute walk). T-bane to Jernbanetorget (12-minute walk).

Cancellations and no-shows after the deadline will be charged.

For last-minute cancellations, please call Katarina on

REPORTS

ART COMMITTEE REPORT

Ann Lislegaard: *ANIMOID*

March 19

Only 14 members signed up for this event at the Henie Onstad Art Centre. I think some may have decided that 13:00 was too late, and others were perhaps uninspired by digital art. It is certainly not an exhibition for everybody, and one member turned on her heel after about 15 minutes!

Nonetheless, it is important to try to understand where this branch of art is heading. Digitalisation is omnipresent and we must jump onto the AI bandwagon. If you drop out now, you will be left behind at the next turn.

Ann Lislegaard, born in 1962, is a pioneer in feminist futurism and in the use of digital art technology and 3D animation. The exhibition presents eleven major works.

ANIMOID invites us to ask what it means to be human in a historical moment marked by digital transformation. We feel dehumanised and fear the power of AI. At the same time, there is a significant loss of biological diversity worldwide. Lislegaard offers a dark, dystopian world where we know that things are disintegrating before our eyes. The message that the works communicate is strong, alarming, and unconventional.

Algorithms – Remains of a Language consists of discarded neon elements that appear as traces of letters and languages that have been lost. AI is a coded algorithm of all the languages in the world, and this installation is a visual version of how language has disappeared and, at the same time, reappeared in an algorithm. If it is dug up in the distant future, it will look like hieroglyphics all over again.



The role of an artist is, in part, to show the world in a way that has never been seen before. We appreciate, for example, expressionist art that exposes our emotions. These installations reveal a world that we cannot see but which belongs to what is now a parallel cyber universe. Lislegaard communicates with us and takes us into a new dimension. Some members did not think this was art at all.

There are several hybrid ‘animoid’ animals in this exhibition. Looking into their eyes is very unnerving. These animals, be it a fox, a deer, or an owl, are looking at us from the future and are trying to communicate what they can see or have

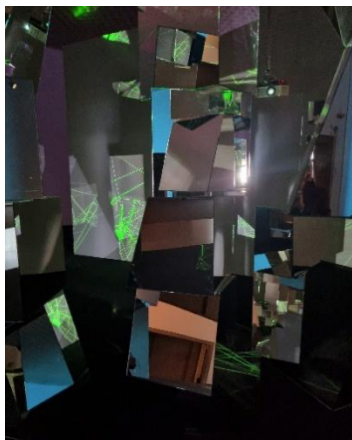
experienced ‘out there’. It is as if the animals and language are all on the verge of collapse.

There is beauty and immense poignancy in Lislegaard's installations.



Spinning and Weaving Ada (2016) is perhaps the work that sums it all up. A spider is in the process of spinning a web (The Web) through a green-tinted night vision filter. Gradually, it becomes clear that the spider is forming letters that spell the name Ada. Ada Augusta Lovelace (1815-1852) was a British mathematician who wrote the first algorithm. 200 years later, it became the foundation for the world’s first software and computer. The animation is a tribute to Lovelace, establishing connections and building networks of communication.

The 3D animation is projected onto mirrored boxes, which fragment, multiply, and reflect our own bodies back to us. We become aware of the presence of networks and the links between our physical and virtual presence. A visualisation of our universe and the cyber universe all at once.



I am sure that this is not an exhibition for everyone, and the small pamphlet at the reception is an essential guide, but some of us have found that the more you think about it, the more impressive it becomes.

Lislegaard draws on many literary works, including Philip K. Dick’s science fiction novel *Do Androids Dream of Electric Sheep* (1968), *Time Machine* by H.G Wells (1895), Robert Zemeckis’ 1997 film *Contact*, and *A Descent into the Maelstrøm* by Edgar Allan Poe (1841).

What we have brushed off as ‘just science fiction’ is now with us. You might not like it, but we must try to understand this brave new world.

We thank Janette Øksnes for arranging this event.

Jane Steenbuch

INTERNATIONAL FORUM



Org.no: 994 566 806

President: Elizabeth S. Rasmussen

Editor: Elizabeth S. Rasmussen

Editorial Team: Elspeth Walseth, Robin Wittusen and Renate Scapin

The Editor and the Editorial Team reserve the right to edit **all** material.

Dispatch: May 1, 2026